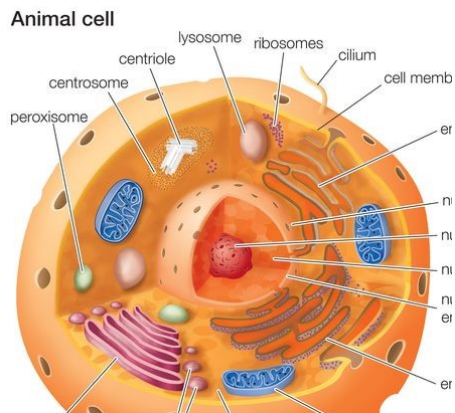


16th September 2016

# Animal cells

Cells are the things that are inside of you. Animals have different cells from us, they can come in all different shapes and sizes. Plants and animal cells both have quite a lot in common.

## Things you can find in both an animal cell and a plant cell:

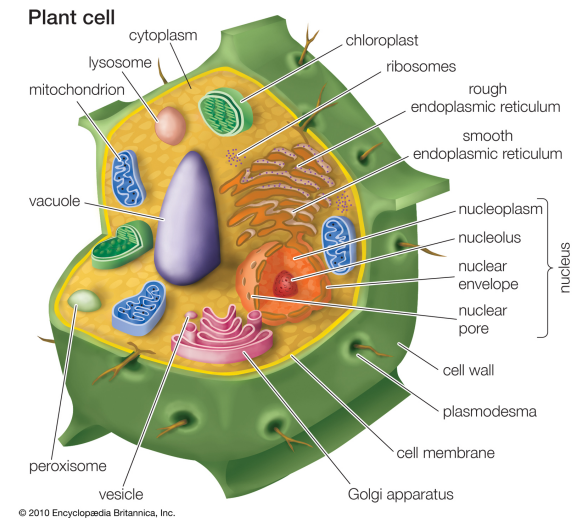


You can find a nucleus, a cell membrane and a cytoplasm. These are all the things that you can find in both of the cells. The nucleus looks like a dot in both of them. The cytoplasm, however, is a

sort of grey skin inside of cytoplasm, however, is a sort of grey skin inside of the actual cell. The cell membrane is the skin of the cell. Cytoplasm, however, it is a sort of grey skin inside of the actual cell. The cell membrane is the skin of the cell.

## Things that you won't find in an animal cell:

However, you cannot find: a vacuole, a cell wall and chloroplasts. They are all not part of the cell parts of an animal cell. The cytoplasm, however, is a sort of grey skin inside of the actual cell. The cell membrane is the skin of the cell.



© 2010 Encyclopædia Britannica, Inc.